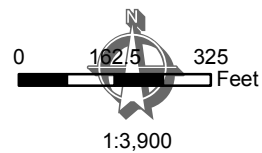


USGS, County of Sonoma

APNs 110-140-005, 110-320-028, -029 & -030

Aerials are in California State Plane Coordinates Zone II, North American Datum 1983. Black and White Aerials flown April 2000; Color Aerials flown April 2011.

Map Scale and Reproduction methods limit precision in physical features displayed. This map is for illustrative purpose only, and is not suitable for parcel-specific decision making. The parcels contained here-in are not intended to represent surveyed data. Site-specific studies are required to draw parcel-specific conclusions. Assessor's parcel data are current as of July 22, 2016.

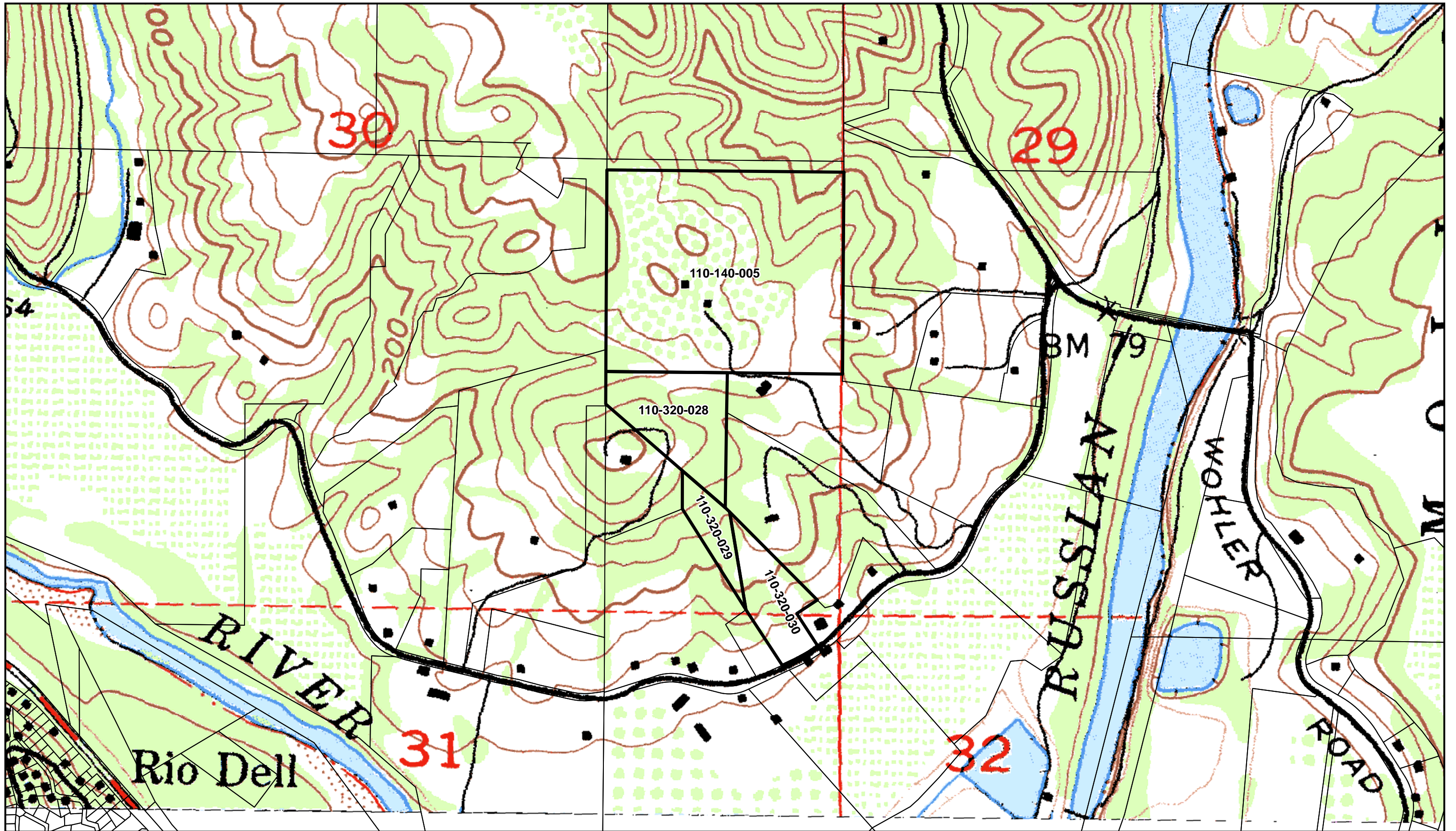


2011 Aerial
County of Sonoma

Permit and Resource Management Department

2550 Ventura Avenue, Santa Rosa, California 95403
707-565-1900
FAX 707-565-1103

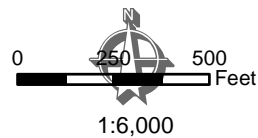




APN 110-140-005, 110-320-028, -029 & -030
 USGS Quad: 19, Guerneville (40 Ft. Contour Interval)

Map Scale and Reproduction methods limit precision in physical features displayed. This map is for illustrative purpose only, and is not suitable for parcel-specific decision making. The parcels contained here-in are not intended to represent surveyed data. Site-specific studies are required to draw parcel-specific conclusions. Assessor's parcel data are current as of January 31, 2017.

No part of this map may be copied, reproduced, or transmitted in any form or by any means without written permission from the Permit and Resource Management Department (PRMD), County of Sonoma, California.

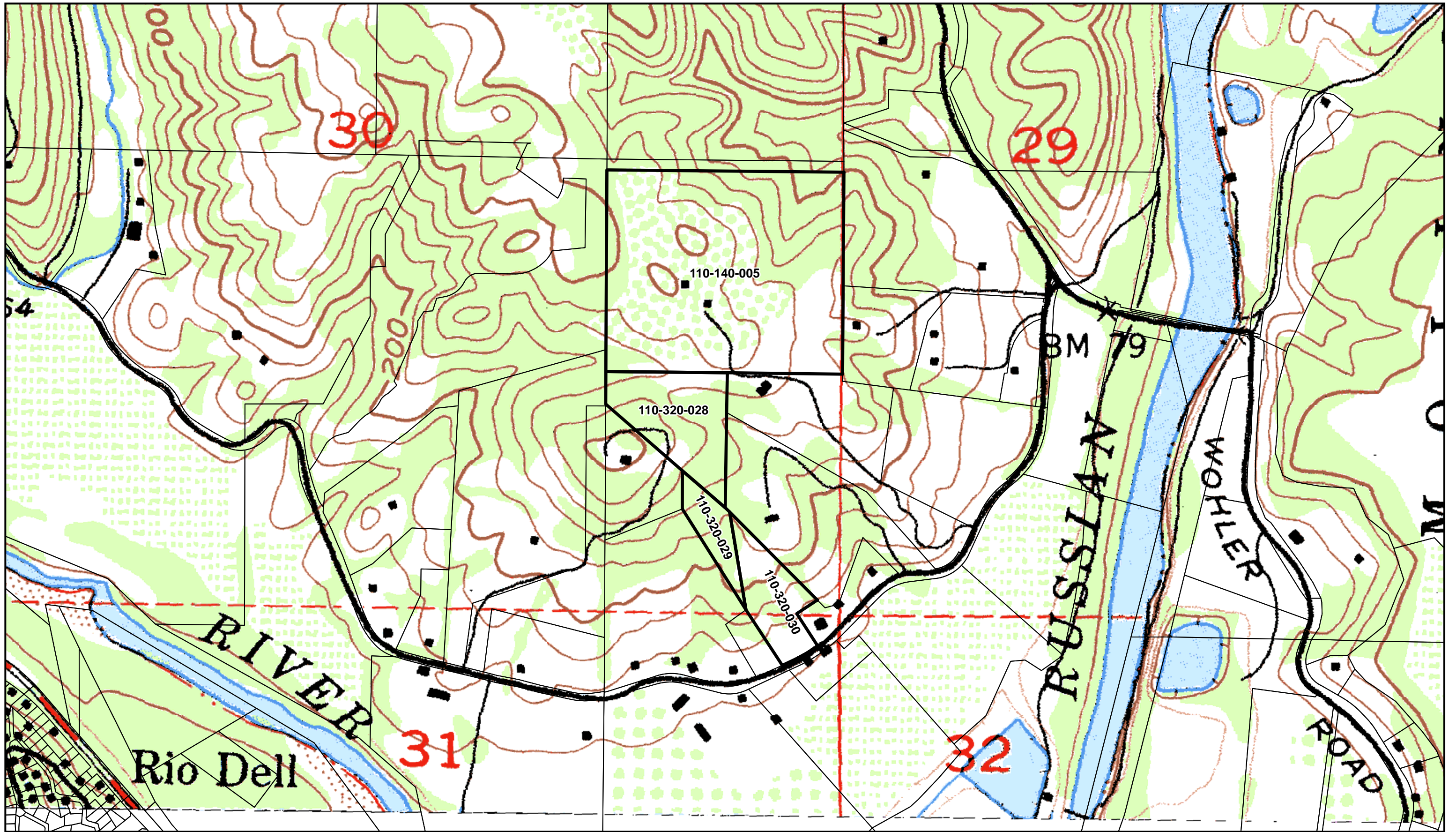


USGS Topographic
 County of Sonoma

Permit and Resource Management Department

2550 Ventura Avenue, Santa Rosa, California 95403
 707-565-1900 FAX 707-565-1103

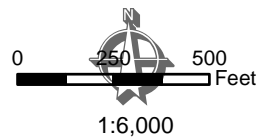




APN 110-140-005, 110-320-028, -029 & -030
 USGS Quad: 19, Guerneville (40 Ft. Contour Interval)

Map Scale and Reproduction methods limit precision in physical features displayed. This map is for illustrative purpose only, and is not suitable for parcel-specific decision making. The parcels contained here-in are not intended to represent surveyed data. Site-specific studies are required to draw parcel-specific conclusions. Assessor's parcel data are current as of January 31, 2017.

No part of this map may be copied, reproduced, or transmitted in any form or by any means without written permission from the Permit and Resource Management Department (PRMD), County of Sonoma, California.



USGS Topographic
 County of Sonoma

Permit and Resource Management Department

2550 Ventura Avenue, Santa Rosa, California 95403
 707-565-1900 FAX 707-565-1103

